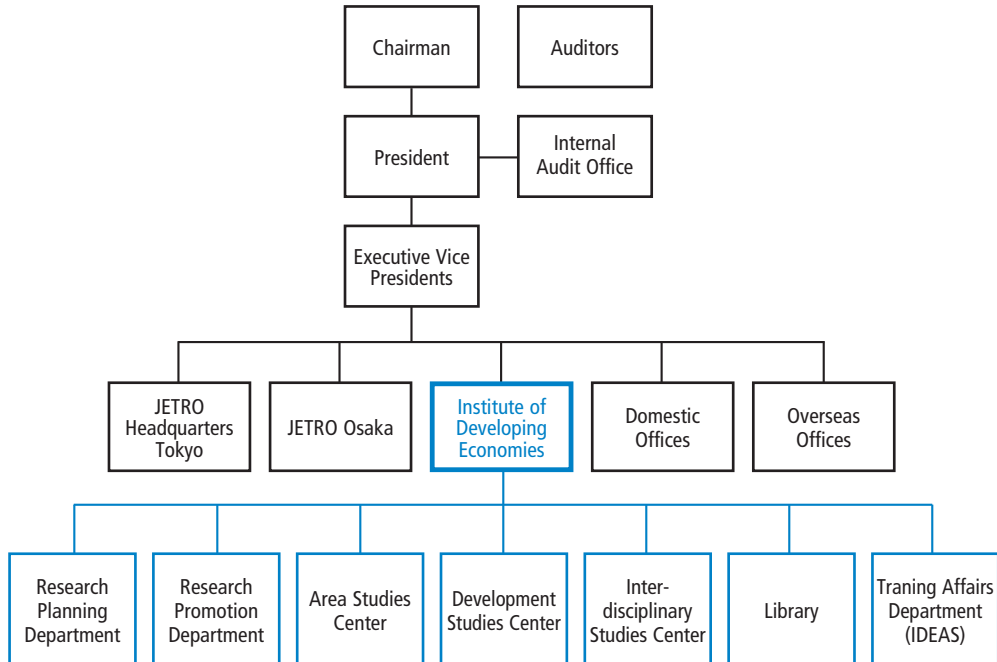


Organization

Organization Chart



Budget

For Fiscal Year 2005

(Million yen)

Income	
Government grant	4,089
Other operating income	203
Total	4,292
Expenditure	
Research	261
Library	158
Publications, seminars and lectures	120
International research exchanges	221
IDE Advanced School (IDEAS)	82
Personnel costs and related expenses	2,748
Other operating expenses	702
Total	4,292