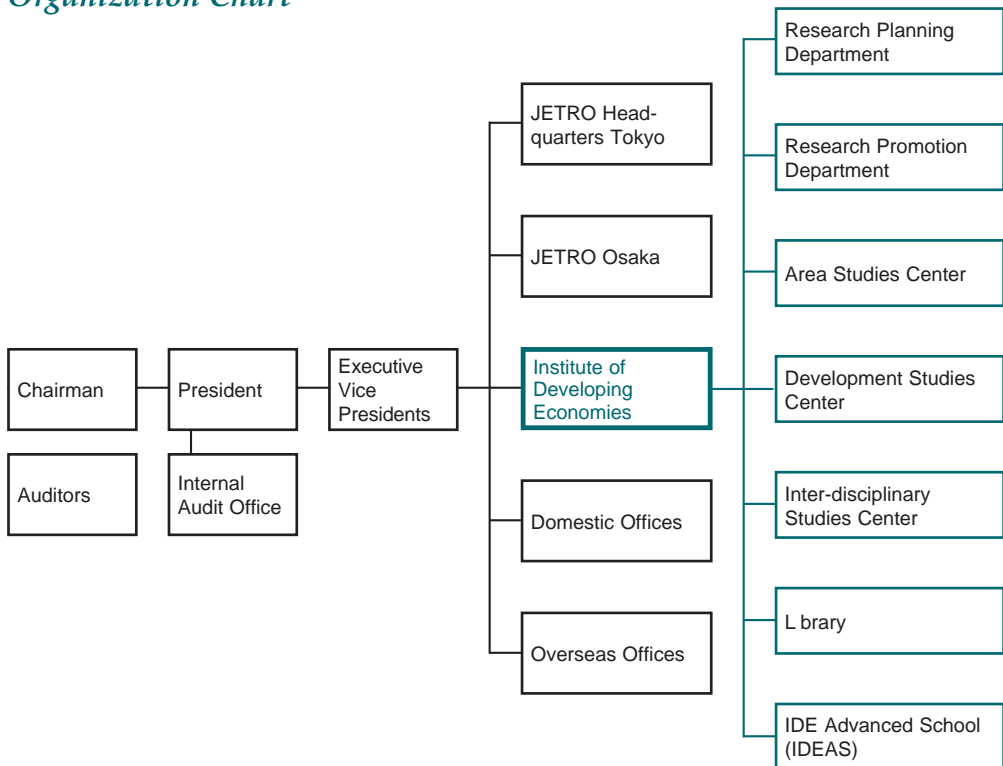


Organization Chart



Budget For Fiscal Year 2004

	(Million yen)
Revenue	
Government grant	4,151
Other operating revenues	1,114
Total	5,265
Expenditure	
Research	278
Library	152
Publications, seminars and lectures	119
International research exchanges	207
IDE Advanced School (IDEAS)	79
Personnel costs and related expenses	2,847
Other operating expenses	1,583
Total	5,265