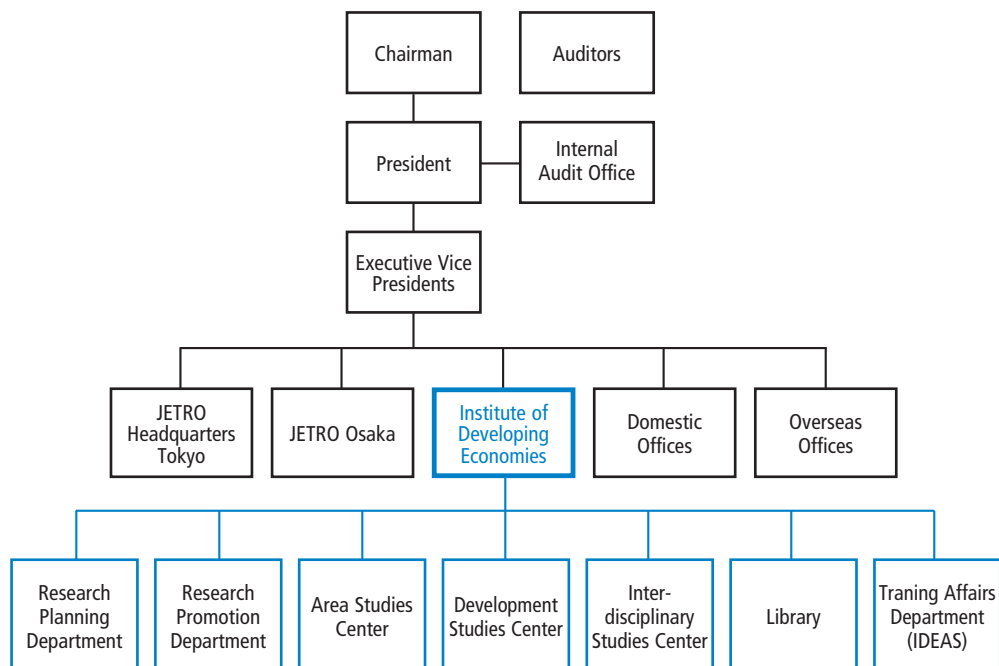


Organization

Organization Chart



Budget

For Fiscal Year 2005

(Million yen)

Income	
Government grant	4,089
Other operating income	203
Total	4,292

Expenditure	
Research	261
Library	158
Publications, seminars and lectures	120
International research exchanges	221
IDE Advanced School (IDEAS)	82
Personnel costs and related expenses	2,748
Other operating expenses	702
Total	4,292

Executive Board and Staff

(As of April 1, 2006)

Executive Board

Masahisa FUJITA
*President of
Institute of Developing
Economies*

Mikimasa YOSHIDA
Executive Vice President

Akifumi KUCHIKI
Executive Vice President

Staff

Chiharu TAMAMURA
Director-General

Sadashi FUKUDA
Director-General

RESEARCH PLANNING DEPARTMENT

Toyojiro MARUYA
Director-General

Shigeki NOMURA
Deputy Director-General

Kazuo WATABE
Director in Charge

Mitsunori YOKOYAMA
Director in Charge

Mitsuru HANDA

Yasue TAKAHASHI

Yoshiaki YOSHIDA

Planning and Coordination Division

Shuji UCHIKAWA
Director

Tomomi YAMASHITA
Deputy Director

Terukazu UCHIKAWA

Kumiko SATO

Naoko ENDO

Hitoshi OTA

Research Management Division

Kenji KOMINE
Director

Kazumoto IKEDA
Deputy Director

Akihiko UENO
Deputy Director

Raimi EZAKI

Tomoko FUJIKAWA

Noburu YOSHIDA

Research Personnel Division

Koshi YAMADA
Director

Yuko ARITA
Deputy Director

Kazuo NAKAYAMA
Deputy Director

Taizo TSUBOI
Chief

Shizuho TANAKADATE

Yasuko KONO

Atsuko HONDA

RESEARCH PROMOTION DEPARTMENT

Susumu IMURA
Director-General

Kumiko SAKUMOTO
Director in Charge

Muneo TAKAHASHI
Director in Charge

Junichi NITTA
Director in Charge

Yuzuru MORIWAKI

Koji NISHIKIMI

Ikuo KUROIWA

Takeo MASUDA

Naoki TAJIMA

Information and Publications Division

Susumu IMURA
Director

Yumiko ISHIKAWA
Deputy Director

Tomoko MIMURA
Chief

Eiichiro SHIMIZU

Mayumi SAWADA

Miwako OKAMOTO

Research Editorial Office

Masahiro OKADA
Director

Yoshihide IWASA

Koji MATSUBARA
Deputy Director

Yukio SAITO

Mami ISHIGAKI

Miho SHIMIZU

Hisashi KAWANO

Takashi SUGIYAMA

International Exchange Division

Takayuki SANADA
Director

Fusao YOSHIMI

Naomi HARADA
Deputy Director

Kyoko KONDO
Deputy Director

Hajime ZAKIMI

Management Information Systems Division

Susumu IMURA
Director

Masato KUROKO
Deputy Director

Hisaki SHIRAMIZU
Deputy Director

AREA STUDIES CENTER

Yasuo ONISHI
Director-General

Taeko HOSHINO
Deputy Director-General

Kazuhisa MATSUI
Director in Charge

Shinichi SHIGETOMI
Director in Charge

Mayumi MURAYAMA
Director in Charge

Kyoko MIURA
Director in Charge

Manami HANDA
Deputy Director

East Asian Studies Group

Satoru OKUDA
Director

Kenichi IMAI
Deputy Director

Hideki HIRAIZUMI

Nao ISHIZAKI

Norihiro SASAKI

Takayuki TAKEUCHI

Yuichi WATANABE

Mami YAMAGUCHI

Haruka MATSUMOTO

Ke DING

Southeast Asian Studies Group I

Yuri SATO
Director

Shigeki HIGASHI
Deputy Director

Masashi NAKAMURA

Yurika SUZUKI

Koichi KAWAMURA

Michio KIMURA

Southeast Asian Studies Group II

Naoko AMAKAWA
Director

Ikuko OKAMOTO

Minoru TERAMOTO

Mai FUJITA

Emi KOJIN

Hisaki KONO

Keola SOUKNILANH

South Asian Studies Group

Norio KONDO
Director

Hisaya ODA
Deputy Director

Etsuyo ARAI

Yoshie SHIMANE

Momoe MAKINO

Takeshi INOUE

Kazuki MINATO

Middle Eastern Studies Group

Yasushi HAZAMA
Director

Kaoru MURAKAMI

Yoko IWASAKI

Natsuko OKA

Hiroyuki AOYAMA

Masaaki WATANABE

Jun SAITO

African Studies Group

Shinichi TAKEUCHI
Director

Tsutomu TAKANE
Deputy Director

Akira SATO

Yuka KODAMA

Kumiko MAKINO

Eiichi YOSHIDA

Azusa HARASHIMA

Latin American Studies Group

Koichi USAMI
Director

Aki SAKAGUCHI

Koichi KITANO

Tatsuya SHIMIZU

Naokatsu UETANI

DEVELOPMENT STUDIES CENTER

Daisuke HIRATSUKA
Director-General

Naoyuki SAKUMOTO
Deputy Director-General

Akio YONEMURA
Deputy Director-General

Hiroshi Kan SATO
Director in Charge

Masami ISHIDA
Director in Charge

Fusako HIRATA
Deputy Director

Eri SUGIYAMA
Chief

Microeconomic Analysis Group

Satoshi INOMATA
Director

Hiroshi KUWAMORI

Bo MENG

Jun NAKAMURA

Macroeconomic Analysis Group

Jinichi UEMURA
Director

Yosuke NODA

Chinami YAMAJI
Chief

Mayumi FUKUMOTO

Kazushi TAKAHASHI

International Economics Studies Group

Kozo KUNIMUNE
Director

Hisao YOSHINO

Hisayuki MITSUO

Mariko WATANABE

Miki HAMADA

Masahiro KODAMA

Yasushi UEKI

Koji KUBO

Development Strategies Studies Group

Tatsufumi YAMAGATA
Director

Seiro ITO

So UMEZAKI

Chie KASHIWABARA

Kensuke KUBO

Law and Institution Studies Group

Masayuki KOBAYASHI
Director

Shinya IMAIZUMI

Hajime SATO

Miwa YAMADA

Futaba ISHIZUKA

INTER-DISCIPLINARY STUDIES CENTER

Junko MIZUNO
Director-General

Shigeaki FUJISAKI
Deputy Director-General

Katsuya MOCHIZUKI
Director in Charge

Akie ISHIDA

Etsuko SUZUKI
Deputy Director

Ritsuko TAKAKUSAGI
Deputy Director

Poverty Alleviation and Social Development Studies Group

Yasuhiro NIMURA
Director

Soya MORI
Deputy Director

Mitsuki SHIOTA

Mari NAKAMURA

Hiroko UCHIMURA

Takayuki HIGASHIKATA

Environment and Natural Resource Studies Group

Shigeaki FUJISAKI
Director

Tadayoshi TERAO

Michikazu KOJIMA

Tsuruyo FUNATSU

Kenji OTSUKA

Nobuhiro HORII

Regional Integration Studies Group

Junko MIZUNO
Director

Jiro OKAMOTO
Deputy Director

Satoru KUMAGAI

Akiko YANAI

Kentaro YOSHIDA

Maki AOKI

Ikumo ISONO

Toshitaka GOKAN

Tomohiro MACHIKITA

Technological Innovation and Economic Growth Studies Group

Yukihito SATO
Director

Makoto ABE

Momoko KAWAKAMI

Hiroshi Ikegami

Rika NAKAGAWA

International Relations and Conflict Studies Group

Junko MIZUNO
Director

Hitoshi SUZUKI
Deputy Director

Miwa TSUDA
Deputy Director

Economic and Technical Cooperation Studies Group

Toshihiro KUDO
Director

Toshikazu YAMADA

Naomi HATSUKANO

Nanae YAMADA

LIBRARY

Tadahiro JUJO
Chief Librarian

Kumiko IZUMISAWA
Deputy Director-General

Fusako SUGAWARA
Director in Charge

Shigeru HIGASHIKAWA
Director in Charge

Michiko ISHII
Director in Charge

Planning and Coordination Division

Kumiko IZUMISAWA
Director

Toshiro TAKAGI

Tomoko MURAI
Deputy Director

Yuko SAWADA

Shuji KANO

Mayumi KISHI

Kanako SAKAI

Processing Division

Shigeko SASAKI
Director

Eiji AOYAGI
Deputy Director

Miho YOKOSE

Tsuguo KUDO

Miyoko NODA

Information Service Division

Eriko ISHIZAKI
Director

Tamotsu SHIMIZU

Yoji OGINO

Erika ITO
Deputy Director

Yoko SUZUKI

Shigetaka KAWADA

Maho KATO

TRAINING AFFAIRS DEPARTMENT

Minoru MAKISHIMA
Director-General

Hiroki NOGAMI
Director in Charge

Kie ONO

Ayako OHARA
Deputy Director

Yasuyo SAKAGUCHI
Chief

Manabu KATO

Shinji HASHIMOTO

Senior Research Fellows Sent Abroad

(for their research topics and host institutions, see pp. 72-73)

Shozo SAKATA
(Vietnam)

Masahiko NAKAGAWA
(Russia and Republic of Korea)

Ryusuke TAKASHIMA
(China)

Takeshi KAWANAKA
(U.S.A.)

Kanako YAMAOKA
(U.S.A.)

Takao TSUNEISHI
(Thailand)

Takeshi USAMI
(China)

Moriki OHARA
(U.S.A.)

**Research Fellows
Sent Abroad**

(for their research topics and host institutions, see pp. 73-75)

Norihiko YAMADA
(Lao P.D.R.)

Kazuhiko OYAMADA
(U.S.A.)

Ichiki TSUCHIYA
(Egypt)

Etsuyo MICHIDA
(Austria and Indonesia)

Yoko UCHIDA
(U.S.A.)

Yoshifumi AYUSAWA
(Singapore)

Takahiro FUKUNISHI
(U.K.)

Hisatoshi HOKEN
(China)

Tatsuhito UETAKE
(Thailand)

Ryohei KONTA
(Brazil)

Koichiro KIMURA
(China)

Izumi CHIBANA
(Philippines)

Sanae SUZUKI
(Malaysia)

Rie TAKAHASHI
(Syria)

Yuko TSUJITA
(U.K.)

Shina MATSUURA

Chikako MIHARA

Makoto KASAHARA

Miyoko NODA

Masako KAWANO

Michio KIMURA

Kazuko SUZUKI

Mitsuru TOIDA

Nobuhiro OKAMOTO

Yusuke OKAMOTO

Bo MENG

**Staff which left during
fiscal year 2005**

Hiroshi TSUKUDA

Keisuke SAITO

Gaku KATO

Keiko SAKAI