

Organization

Executive Board and Staff As of April 1, 2005

Executive Board

Masahisa FUJITA
*President of
Institute of Developing
Economies*

Mikimasa YOSHIDA
Executive Vice President

Akifumi KUCHIKI
Executive Vice President

Staff

Research Planning Department

Toyojirō MARUYA
Director-General

Shigeki NOMURA
Deputy Director-General

Mitsunori YOKOYAMA
Director in Charge

Mitsuru HANDA

Yasue TAKAHASHI

Yoshiaki YOSHIDA

Planning and Coordination Division

Shūji UCHIKAWA
Director

Tomomi YAMASHITA
Assistant Director

Chikako MIHARA
Assistant Director

Terukazu UCHIKAWA

Koichi KAWAMURA

Kumiko SATŌ

Naoko ENDŌ

Ikumo ISONO

Research Management Division

Kenji KOMINE
Director

Akihiko UENO
Assistant Director

Yōko SATŌ
Chief

Masahiro MORINAGA
Chief

Hiroshi TSUKUDA

Maho KATŌ

Tomoko FUJIKAWA

Noburu YOSHIDA

Research Personnel Division

Kōshi YAMADA
Director

Yūko ARITA
Assistant Director

Kazuo NAKAYAMA
Chief

Taizō TSUBOI
Chief

Shizuho TANAKADATE

Yasuko KŌNO

Atsuko HONDA

Research Promotion Department

Takao TSUNEISHI
Director-General

Susumu IMURA
Deputy Director-General

Fusao YOSHIMI
Director in Charge

Muneo TAKAHASHI
Director in Charge

Jun'ichi NITTA
Director in Charge

Kazuko SUZUKI
Senior Officer

Yoshihide IWASA
Senior Officer

Yuzuru MORIWAKI
Senior Officer

Information and Publications Division

Shigeru HIGASHIKAWA
Director

Yumiko ISHIKAWA
Assistant Director

Tomoko MIMURA
Chief

Eiichirō SHIMIZU

Research Editorial Office

Masahiro OKADA
Director

Kōji MATSUBARA
Assistant Director

Yukio SAITŌ

Ritsuko TAKAKUSAGI

Mami ISHIGAKI

Miho SHIMIZU

Hisashi KAWANO

Takashi SUGIYAMA

International Exchange Division

Takayuki SANADA
Director

Naomi HARADA
Assistant Director

Naoki TAJIMA
Assistant Director

Mayumi SAWADA

Hajime ZAKIMI

Ke DING

**Management Information
Systems Division**

Takeo MASUDA
Director

Masato KUROKO
Assistant Director

Hisaki SHIRAMIZU
Chief

Area Studies Center

Sadashi FUKUDA
Director-General

Yasuo ŌNISHI
Deputy Director-General

Taeko HOSHINO
Deputy Director-General

Kumiko SAKUMOTO
Director in Charge

Kazuhisa MATSUI
Director in Charge

Shinichi SHIGETOMI
Director in Charge

Michio KIMURA
Senior Researcher

Fusako HIRATA
Chief

East Asian Studies Group

Satoru OKUDA
Director

Hideki HIRAIZUMI
Assistant Director

Ken'ichi IMAI

Nao ISHIZAKI

Norihiro SASAKI

Takayuki TAKEUCHI

Yūichi WATANABE

Mami YAMAGUCHI

Haruka MATSUMOTO

**Southeast Asian Studies
Group I**

Yuri SATO
Director

Shigeki HIGASHI
Assistant Director

Tsuruyo FUNATSU

Takeshi KAWANAKA

Masashi NAKAMURA

Yurika SUZUKI

Izumi CHIBANA

**Southeast Asian Studies
Group II**

Naoko AMAKAWA
Director

Ikuko OKAMOTO

Minoru TERAMOTO

Mai FUJITA

Shina MATSUURA

Emi KŌJIN

South Asian Studies Group

Mayumi MURAYAMA
Director

Etsuyo ARAI

Yūko TSUJITA

Yoshie SHIMANE

Momoe MAKINO

**Middle Eastern Studies
Group**

Yasushi HAZAMA
Director

Kaoru MURAKAMI

Yōko IWASAKI

Natsuko OKA

Hiroyuki AOYAMA

Masaaki WATANABE

African Studies Group

Shin'ichi TAKEUCHI
Director

Akira SATŌ

Yuka KODAMA

Kumiko MAKINO

Eiichi YOSHIDA

Azusa HARASHIMA

**Latin American Studies
Group**

Kōichi USAMI
Director

Kanako YAMAOKA

Aki SAKAGUCHI

Kōichi KITANO

Tatsuya SHIMIZU

Naokatsu UETANI

**Development Studies
Center**

Mitsuru TOIDA
Director-General

Naoyuki SAKUMOTO
Deputy Director-General

Akio YONEMURA
Deputy Director-General

Kyōko MIURA
Director in Charge

Hiroshi Kan SATO
Director in Charge

Masami ISHIDA
Director in Charge

Yosuke NODA
Senior Researcher

Toshikazu YAMADA
Senior Researcher

Eri SUGIYAMA
Chief

Microeconomic Analysis Group

Ikuo KUROIWA
Director

Nobuhiro OKAMOTO
Assistant Director

Makoto KASAHARA
Assistant Director

Satoshi INOMATA

Hiroshi KUWAMORI

Bo MENG

Jun NAKAMURA

Macroeconomic Analysis Group

Jinichi UEMURA
Director

Chinami YAMAJI
Chief

Mayumi FUKUMOTO

Yūsuke OKAMOTO

International Economics Studies Group

Kōzō KUNIMUNE
Director

Hisao YOSHINO

Hisayuki MITSUO

Mariko WATANABE

Miki HAMADA

Masahiro KODAMA

Kōji KUBO

Development Strategies Studies Group

Tatsufumi YAMAGATA
Director

Seirō ITŌ

So UMEZAKI

Chie KASHIWABARA

Kensuke KUBO

Kōichirō KIMURA

Law and Institution Studies Group

Naoyuki SAKUMOTO
Director

Shin'ya IMAIZUMI

Hajime SATŌ

Miwa YAMADA

Futaba ISHIZUKA

Inter-disciplinary Studies Center

Chiharu TAMAMURA
Director-General

Shigeaki FUJISAKI
Deputy Director-General

Katsuya MOCHIZUKI
Director in Charge

Takeshi USAMI
Director in Charge

Akie ISHIDA
Senior Researcher

Etsuko SUZUKI
Assistant Director

Poverty Alleviation and Social Development Studies Group

Yasuhiro NIMURA
Director

Sōya MORI
Assistant Director

Mitsuki SHIOTA

Mari NAKAMURA

Takayuki HIGASHIKATA

Environment and Natural Resource Studies Group

Shigeaki FUJISAKI
Director

Tadayoshi TERAŌ

Michikazu KOJIMA

Kenji ŌTSUKA

Nobuhiro HORII

Regional Integration Studies Group

Daisuke HIRATSUKA
Director

Satoru KUMAGAI

Akiko YANAI

Kentarō YOSHIDA

Sanae SUZUKI

Maki AOKI

Technological Innovation and Economic Growth Studies Group

Yukihito SATO
Director

Makoto ABE

Momoko KAWAKAMI

Moriki ŌHARA

Hiroshi IKEGAMI

Rika NAKAGAWA

International Relations and Conflict Studies Group

Keiko SAKAI
Director

Hitoshi SUZUKI
Assistant Director

Miwa TSUDA

Tomoko KUBOTA

Economic and Technical Cooperation Studies Group

Toshihiro KUDŌ
Director

Naomi HATSUKANO

Nanae YAMADA

Library

Tadahiro JŪJŌ
Chief Librarian

Fusako SUGAWARA
Director in Charge

Yōji OGINO
Director in Charge

Toshirō TAKAGI
Senior Researcher

Tamotsu SHIMIZU
Senior Officer

Planning and Coordination Division

Kumiko IZUMISAWA
Director

Eriko ISHIZAKI
Assistant Director

Tomoko MURAI
Assistant Director

Masako KAWANO

Manami HANDA

Yūko SAWADA

Hiroko ASAI

Processing Division

Michiko ISHII
Director

Erika ITŌ
Assistant Director

Kazumoto IKEDA
Chief

Miyoko NODA

Miho YOKOSE

Eiji AOYAGI

Tsuguo KUDŌ

Information Service Division

Shigeko SASAKI
Director

Kyōko KONDŌ
Chief

Yōko SUZUKI

Shigetaka KAWADA

Rie TAKAHASHI

Shūji KANŌ

Training Affairs Department

Minoru MAKISHIMA
Director-General

Kie ONO
Senior Officer

Yasuyo SAKAGUCHI
Chief

Shinji HASHIMOTO

Senior Research Fellows Sent Abroad

Keisuke SAITŌ
China-Japan Long-term
Trade Committee, Ministry
of Foreign Trade and
Economic Cooperation
China

Junko MIZUNO
School of International
Relations and Public Affairs,
Fudan University
China

Norio KONDŌ
Centre for the Study
of Law and Governance,
Jawaharlal Nehru University
India

Kazuo WATABE
JETRO Sydney
Australia

Kōji NISHIKIMI
Economic Research Institute,
Ministry of Economy
and Budget Planning
Kazakhstan

Jirō OKAMOTO
Faculty of Political Science,
Thammasat University
Thailand

Masayuki KOBAYASHI
Asian Law Center,
University of Washington
School of Law
USA

Tsutomu TAKANE
Centre for Social Research,
University of Malawi
Malawi

Masahiko NAKAGAWA
Institute for Far Eastern Studies,
Russian Academy of Sciences
Russia

Hisaya ODA
School of Social Sciences,
Lahore University
of Management Sciences
Pakistan

Shōzō SAKATA
Vietnam Institute of Economics,
Vietnamese Academy
of Social Sciences
Vietnam

Research Fellows Sent Abroad

Tatsuhito UETAKE
Faculty of Economics,
Chulalongkorn University
Thailand

Kazuhiko OYAMADA
Department of Applied
Economics, University
of Minnesota
USA

Hiroko UCHIMURA
Development Centre,
Organization for Economic
Co-operation and Development
(OECD)
France

Yasushi UEKI
Economic Commission
for Latin America and
the Caribbean,
United Nations
Chile

Ichiki TSUCHIYA
Social Research Center,
American University in Cairo
Egypt

Norihiko YAMADA
Faculty of Economics
and Management,
National University of Laos
Laos

Takahiro FUKUNISHI
Department of Economics,
School of Oriental
and African Studies,
University of London
U.K.

Hisatoshi HÖKEN
China Center for Economic
Research, Peking University
China

Ryōhei KONTA
Institute of Applied
Economic Research
Brazil

Etsuyo MICHIDA
United Nations Industrial
Development Organization,
Vienna International Centre
Austria

Yōko UCHIDA
Department of Agricultural
Economics, Purdue University
USA

Gaku KATO
Center for International
Forestry Research
Indonesia

Yoshifumi AYUSAWA
Institute of Southeast Asian
Studies
Singapore

**Staff which left
during fiscal year 2004**

Shin'ya ARAKAWA

Atsushi KOBORI

Takumi FUJINO

Yoshiko SUZUKI

Hiroko ASAI

Shinji HASHIMOTO

Jun NAKAMURA

Akifumi KUCHIKI

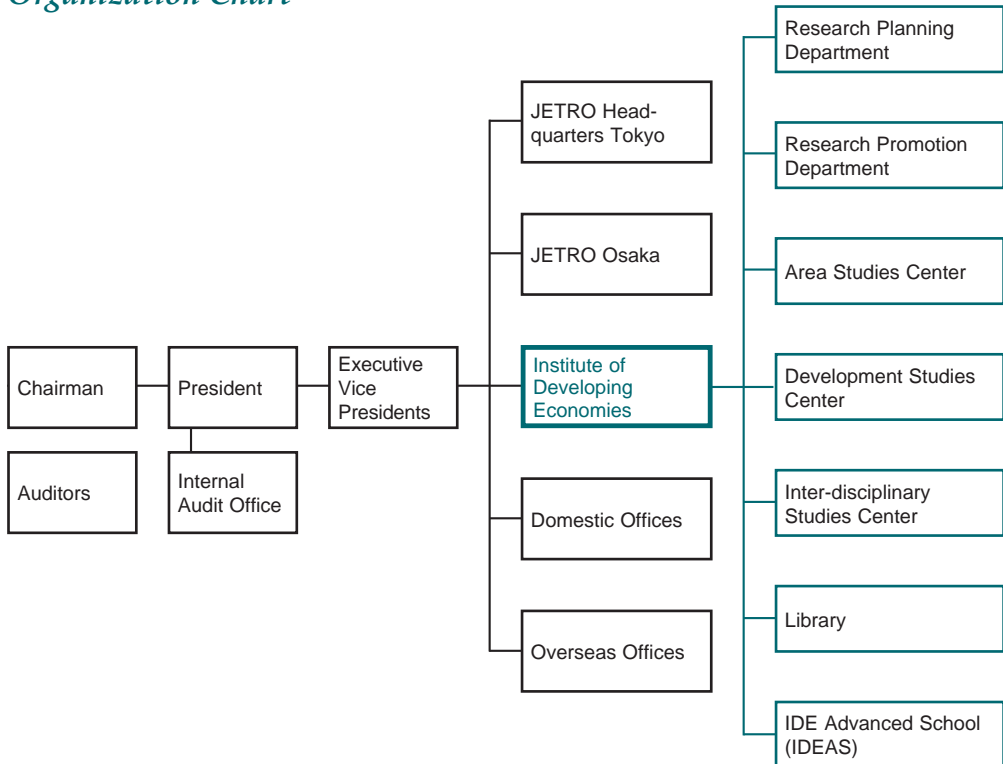
Aiko TATEYAMA

Hikari ISHIDO

Shirō MITSUI

Tsutomu ASHITOMI

Organization Chart



Budget For Fiscal Year 2004

	(Million yen)
Revenue	
Government grant	4,151
Other operating revenues	1,114
Total	5,265
Expenditure	
Research	278
Library	152
Publications, seminars and lectures	119
International research exchanges	207
IDE Advanced School (IDEAS)	79
Personnel costs and related expenses	2,847
Other operating expenses	1,583
Total	5,265