



BAPPENAS

DEVELOPMENT AND HRD:

LOCAL GOVERNMENT CAPACITY BUILDING FOR DECENTRALIZED DEVELOPMENT IN INDONESIA

Endah Murniningtyas, Ph.D

Director for Poverty Alleviation

National Development Planning Agency (BAPPENAS)

Tokyo, March 10, 2010

OUTLINE

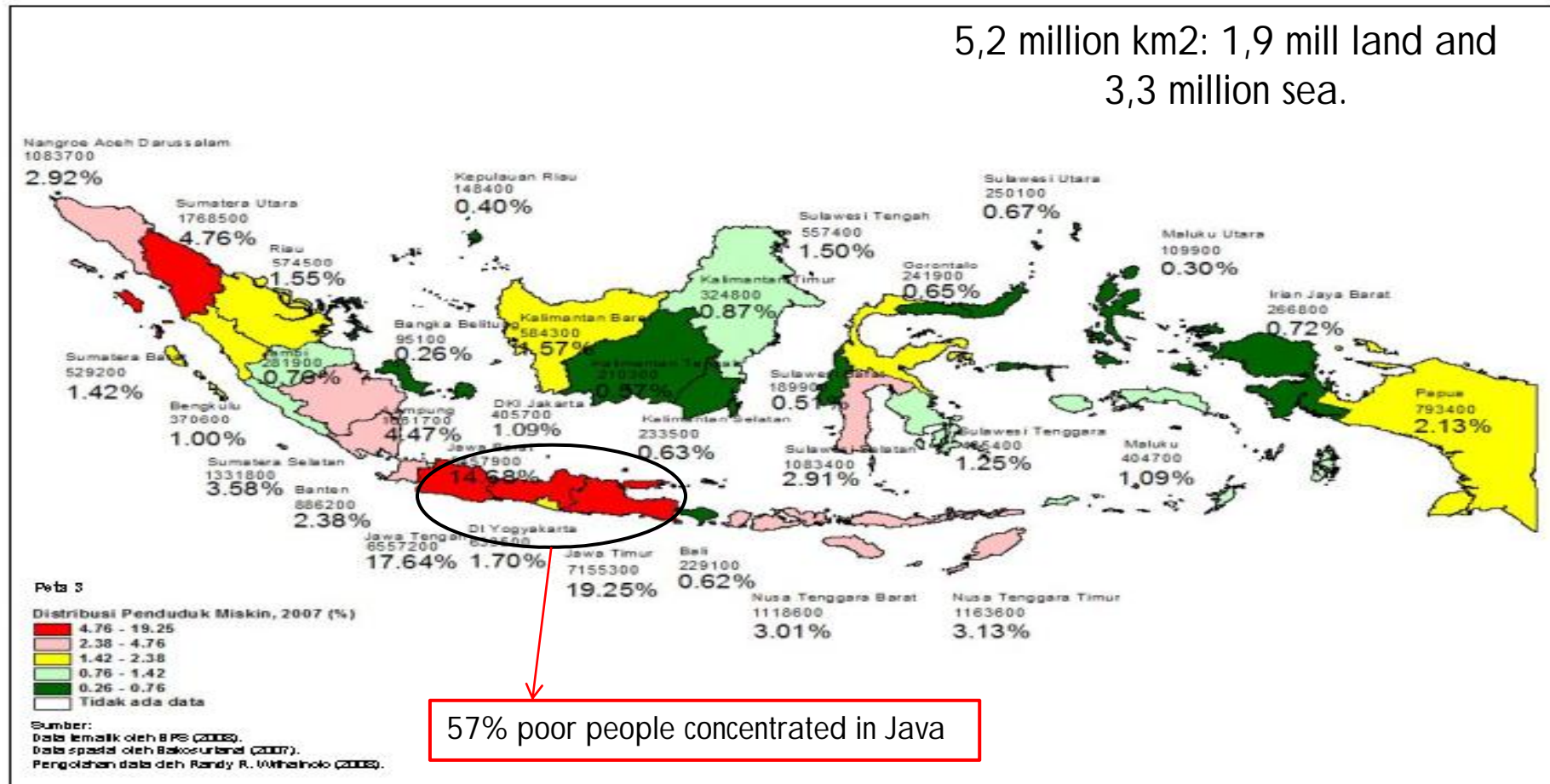
2

1. **INDONESIA: DIVERSE AND DECENTRALIZED**
2. **POVERTY SITUATION AND THE POLICY**
3. **HRD: IMPROVING EFFECTIVENESS OF POVERTY ALLEVIATION.**

I. DIVERSE AND DECENTRALIZED INDONESIA

Distribution of population: disperse and uneven

5,2 million km²: 1,9 mill land and 3,3 million sea.

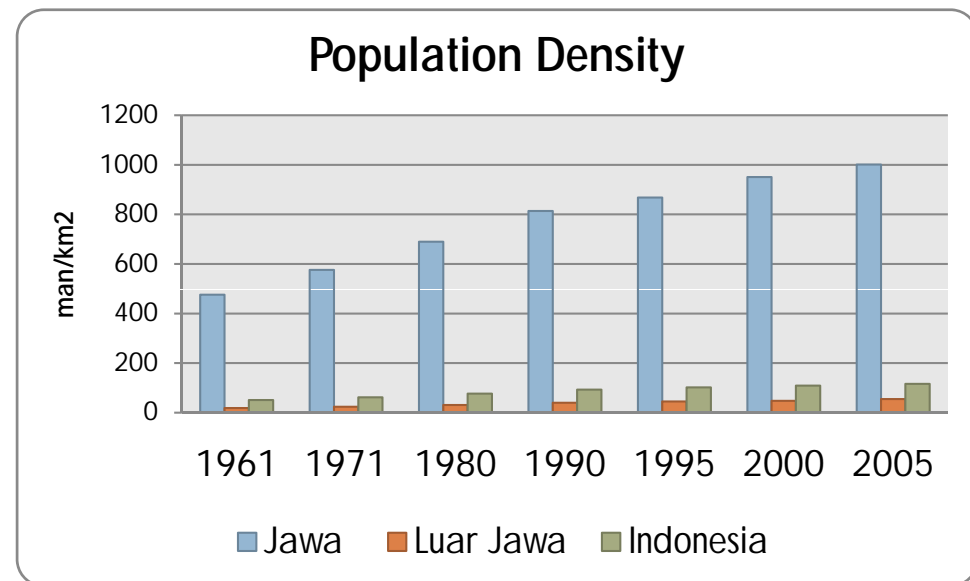
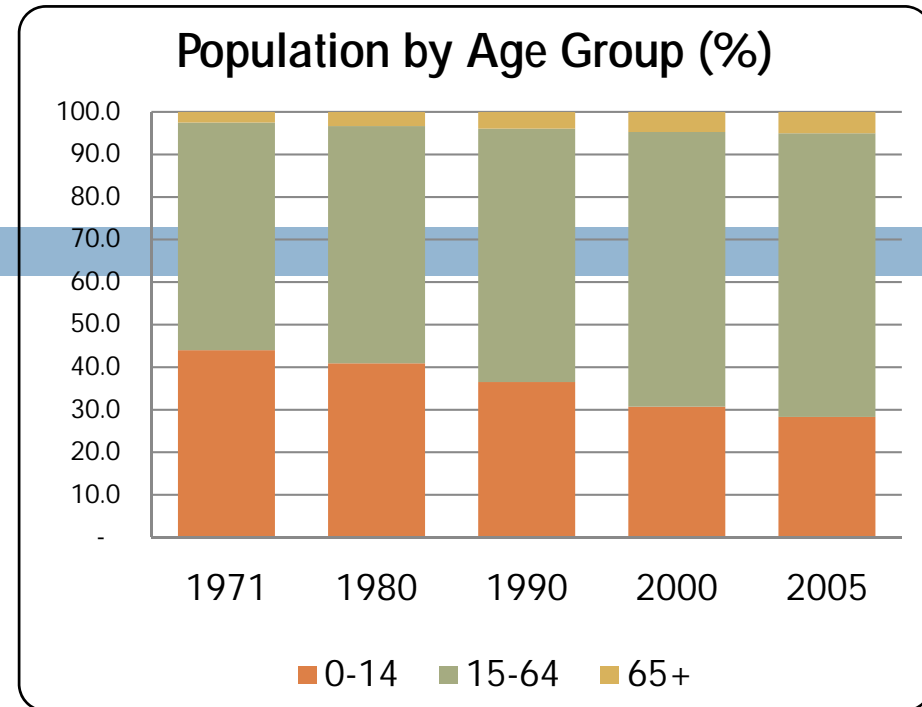
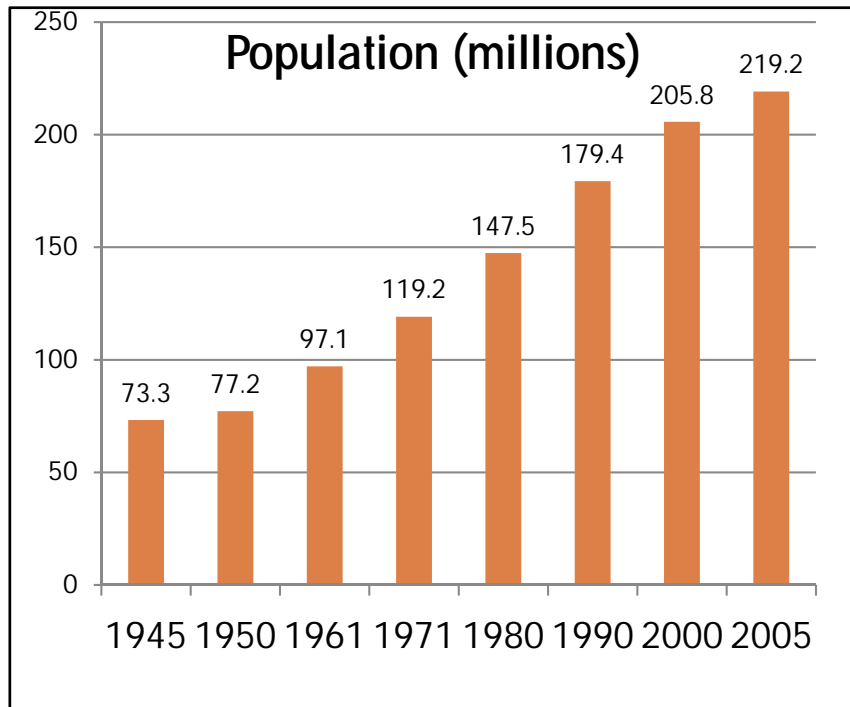


> 5 million: East, Central and West Java

1-2 million: North and South Sumatera, Lampung, Aceh, West and East Nusa Tenggara, South Sulawesi

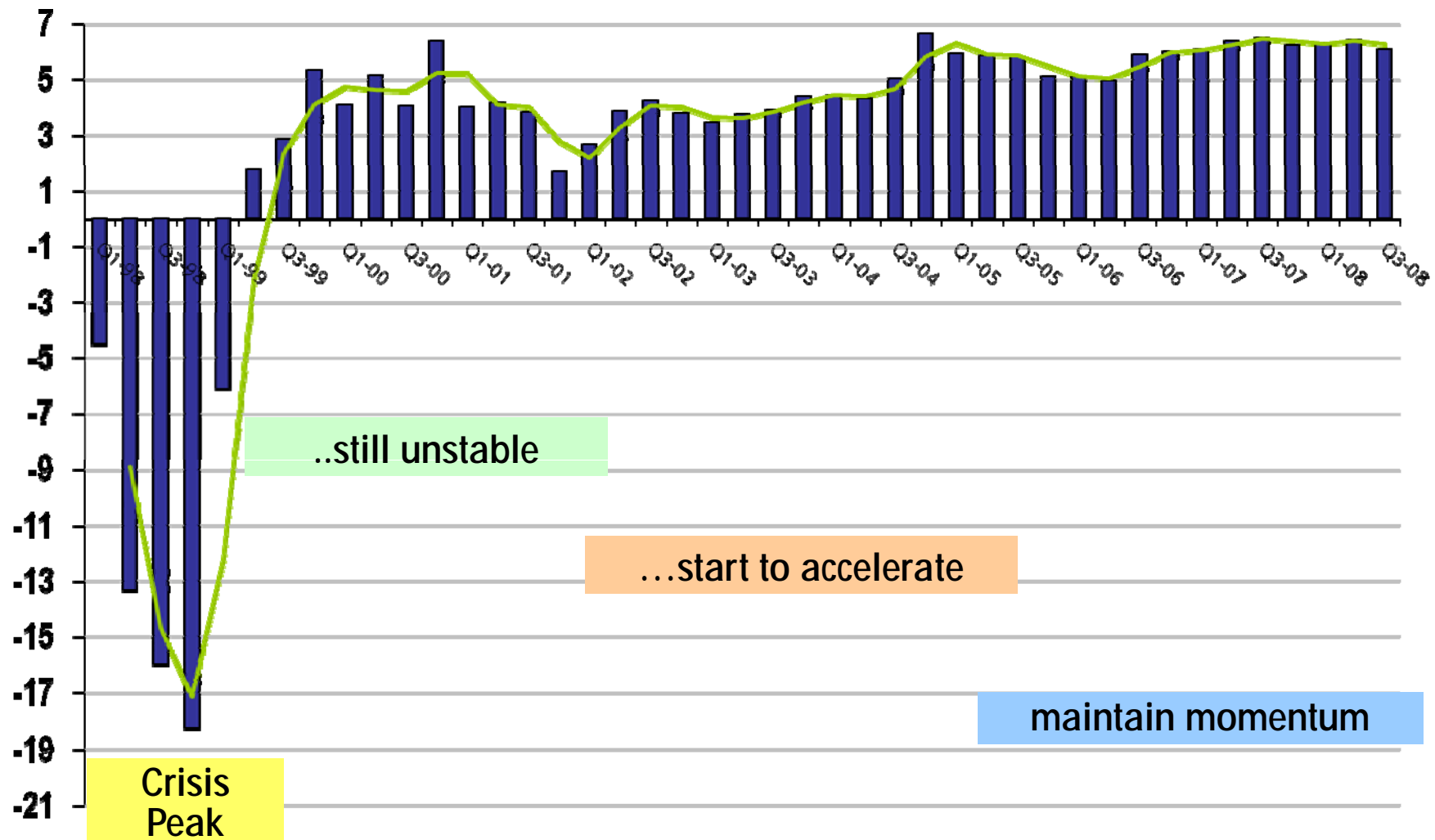
0,5 -1 mill: Papua, Central Sulawesi, West Kalimantan, Banten, Jogja, Riau and West Sumatera.

1. Total population still steadily increasing.
2. Density in Java:off Java = 20:1.
3. Increased proportion of productive age (15-64) -> challenge for job creation.



THE ECONOMY

Since economic crisis 1998, Indonesia has been gaining momentum and growing at above 6% since 2006



Current economic growth decreases but still at the positive level

7

Sector	2006	2007	2008	2009		
				1 st Q	2 nd Q	3 rd Q
Agriculture	3.36	3.43	4.77	5.26	3.80	4.43
Mining	1.70	2.02	0.51	2.43	2.85	4.10
Manufacturing	4.59	4.67	3.66	1.50	1.51	1.43
Electricity	5.76	10.33	10.92	11.40	13.46	13.86
Construction	8.34	8.61	7.31	6.30	6.34	7.18
Trade	6.42	8.41	7.23	0.52	0.08	0.16
Transportation	14.23	14.04	16.69	17.10	17.31	17.62
Financial	5.47	7.99	8.24	6.27	5.80	5.51
Other services	6.16	6.60	6.43	6.81	7.10	6.67
GDP growth	5.50	6.28	6.06	4.45	4.24	4.23

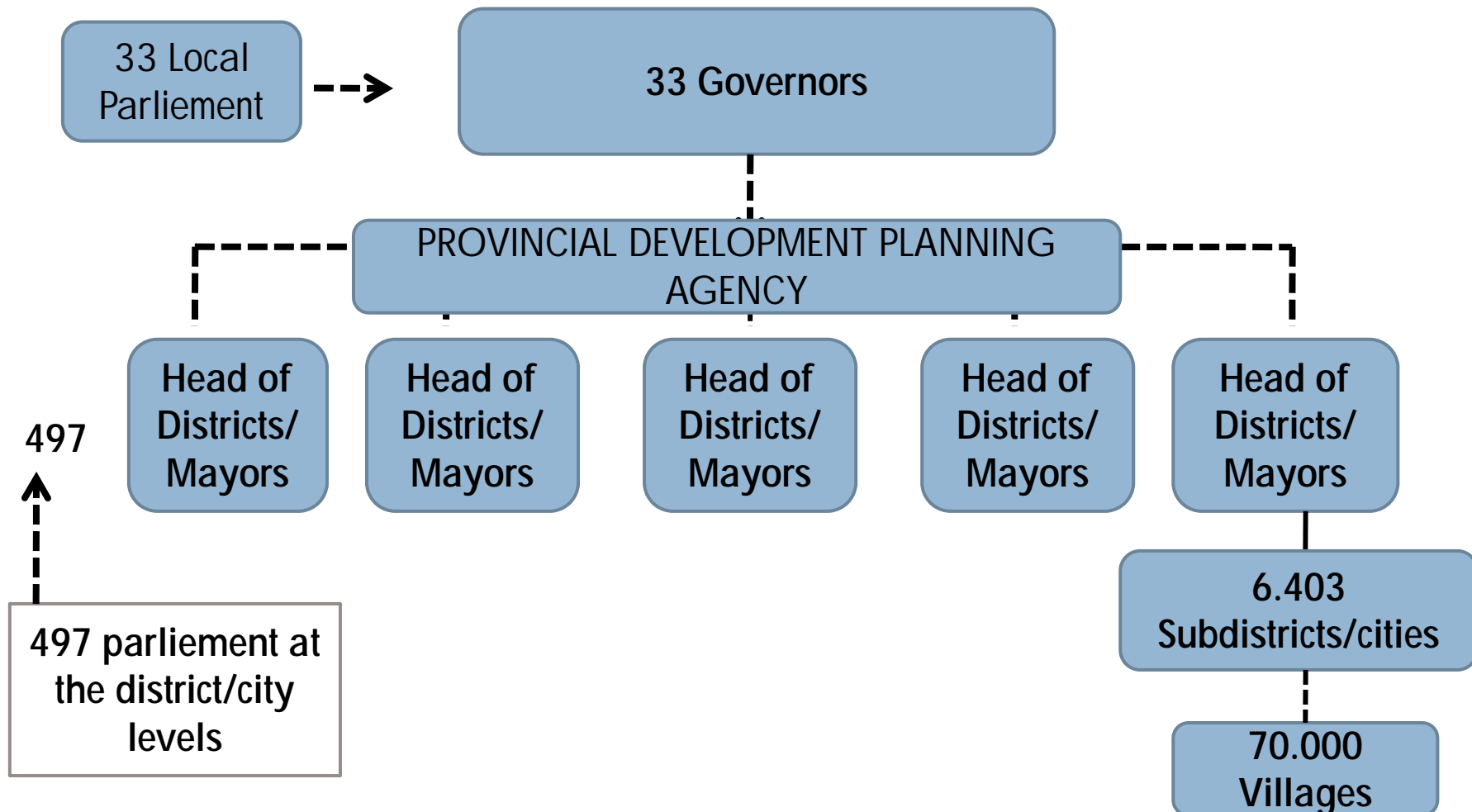
Number of Provinces, Districts/Cities, Sub districts and Villages

8

Year	Number of				
	Provinces	Districts	Cities	Sub districts	Villages
(1)	(2)	(3)	(4)	(5)	(6)
1999	26	268	73	4,044	69,065
2000	26	268	73	4,049	69,050
2001	30	268	85	4,424	68,819
2002	30	302	89	4,918	70,460
2003	30	349	91	4,994	70,921
2004	33	349	91	5,155	69,474
2005	33	349	91	5,277	69,868
2008	33	387	96	6.520	75.666

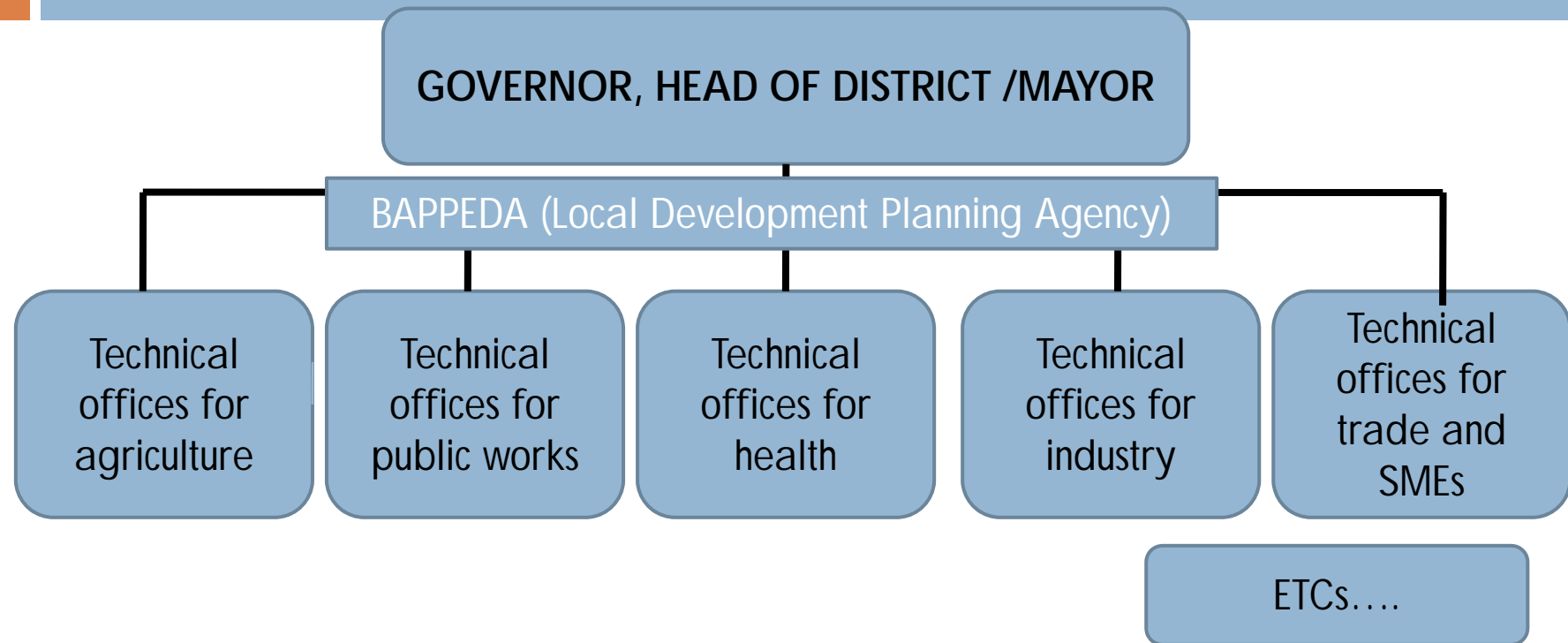
There are 33 provinces-33 provincial parliaments;
497 districts/cities and also holders 497 local parliaments. All
directly elected.

9



Each of provinces and districts/cities are equipped with local offices.

10

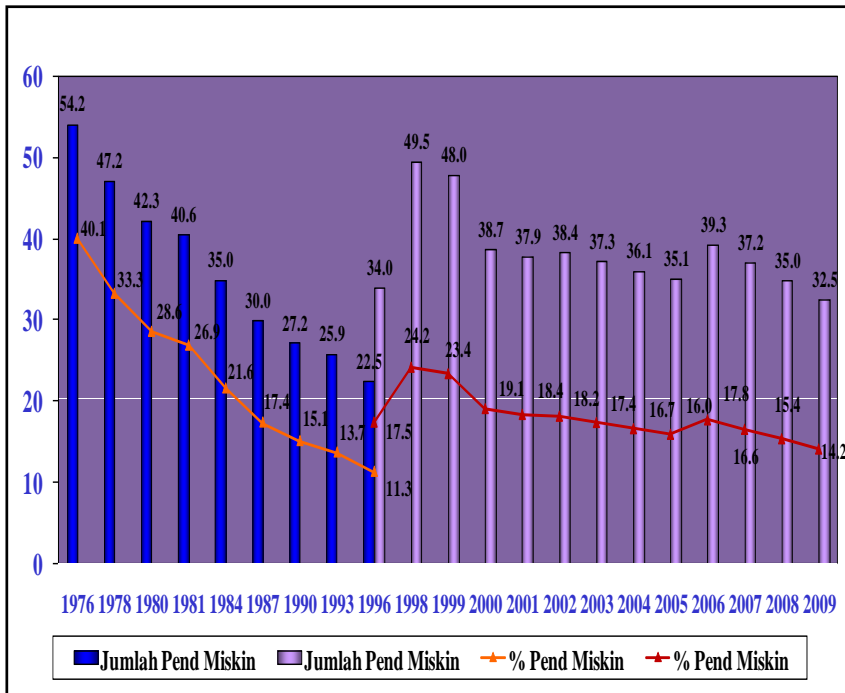


II. POVERTY SITUATION AND POLICIES

II. 1. POVERTY SITUATION

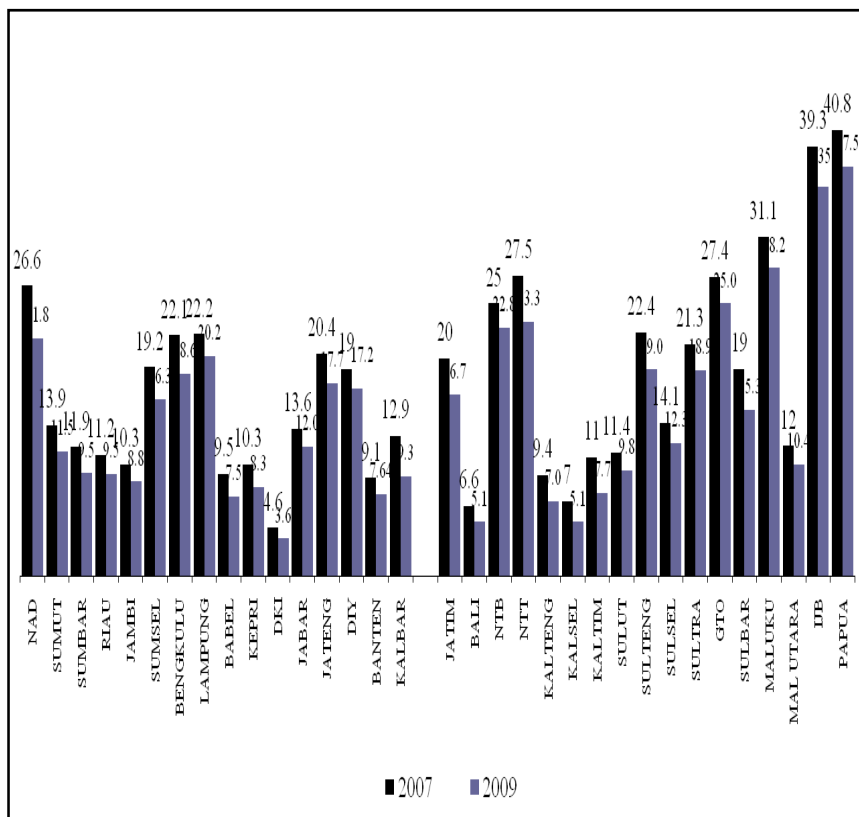
12

- 1. At the national level poverty rate continued to decrease, but:
 - a. Inter provinces and districts are varies and there is gap
 - b. Provision of basic need are still below the minimum level and inequality across quintel existed.
 - c. Increased vulnerability → number of near poor HH increase despite total poor HH is decreasing.



Kuantil	Calorie intake [kkal/kap/hari]		APS SD [7-12]		APS SMP [13-15]		APS SMA [16-18]	
	2006	2008	2006	2008	2006	2008	2006	2008
1	1.564	1.613	95,3	98,4	72,4	74,3	34,3	37,8
2	1.799	1.856	97,2	98,8	80,7	82,0	44,2	47,3
3	1.933	2.007	97,9	99,0	86,2	87,2	54,8	55,8
4	2.039	2.133	98,5	99,2	91,8	91,0	65,5	62,3
5	2.216	2.308	99,1	99,4	94,6	93,2	74,0	70,8
Total	1.923	1.983	97,4	98,9	84,1	84,8	53,9	55,1

Disparity across provinces and increase vulnerability



POOR HH STATUS	PSE 2005	PPLS 2008
1. VERY POOR HH	3.894.314	2.992.433
2. POOR HH	8.236.990	6.828.912
3. NEAR POOR	6.969.601	7.662.664
TOTAL	19.100.905	17.484.009

Sumber: BPS

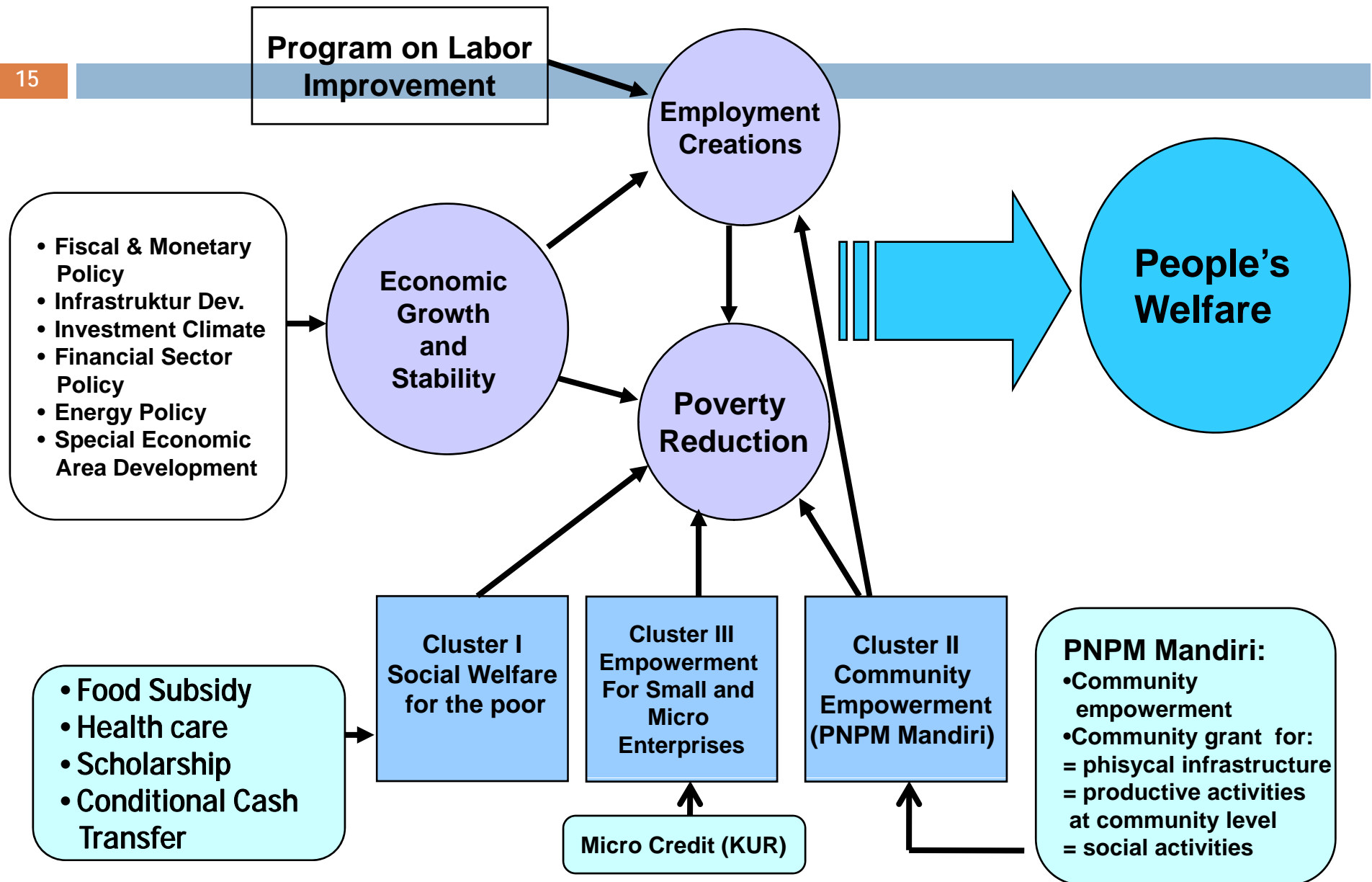
II. 2. THE POLICY

14

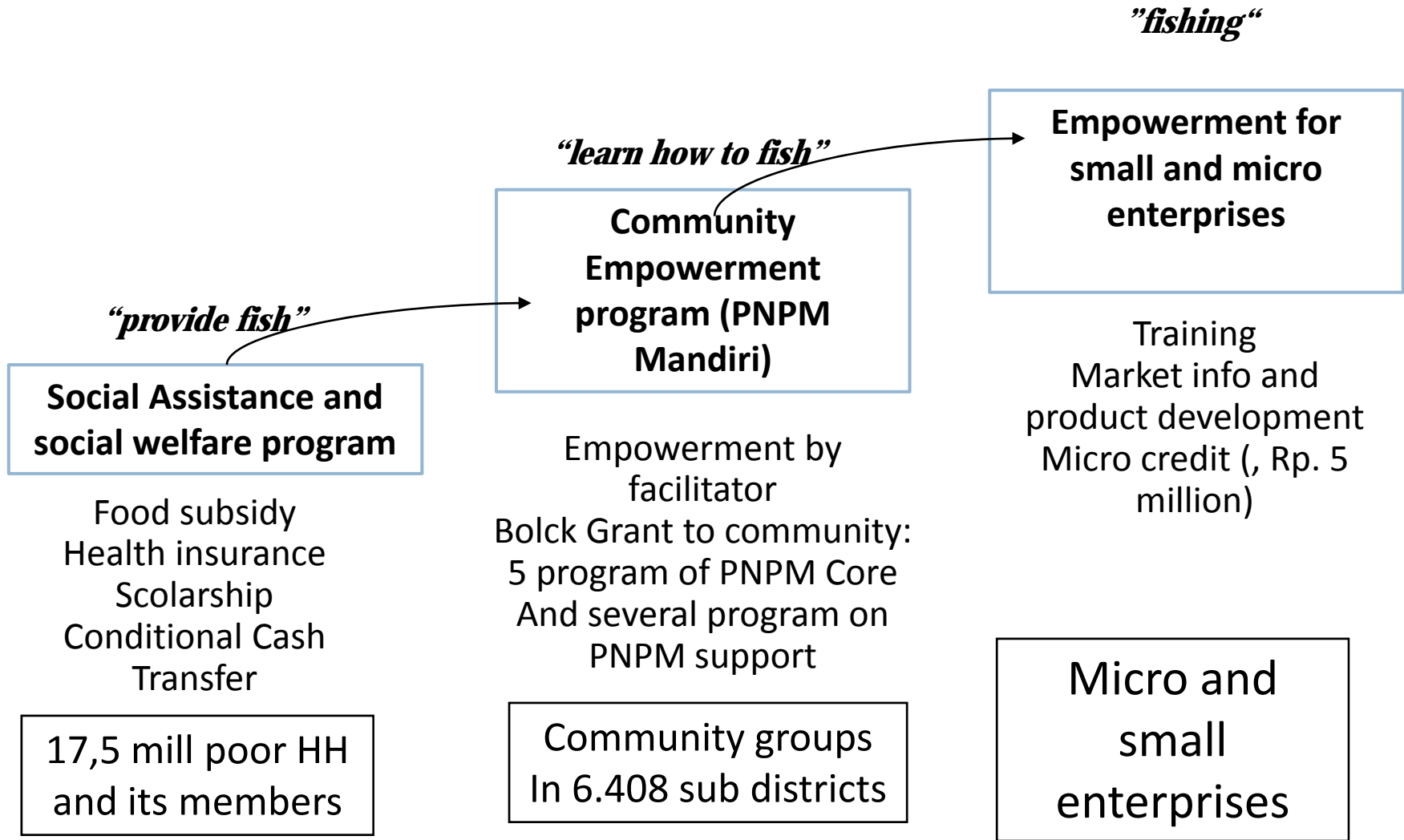
1. Poverty alleviation is an affirmative policy for the poor, along with economic policies.
2. Poverty policy development the last 5 years:
 - a. Micro Data: Poor HH with name and address → name of HH members.
 - b. Community Empowerment Program: empowering community → participative development and sustainability impact of poverty programs.
 - c. 3 Clusters of poverty alleviation program.
 - d. Coordinating Team for Poverty Alleviation: central and local level, with Bappeda (local planning institutions) as secretariat.

Poverty alleviation (3 clusters): affirmative policy for the poor, along with economic and employment policies.

15

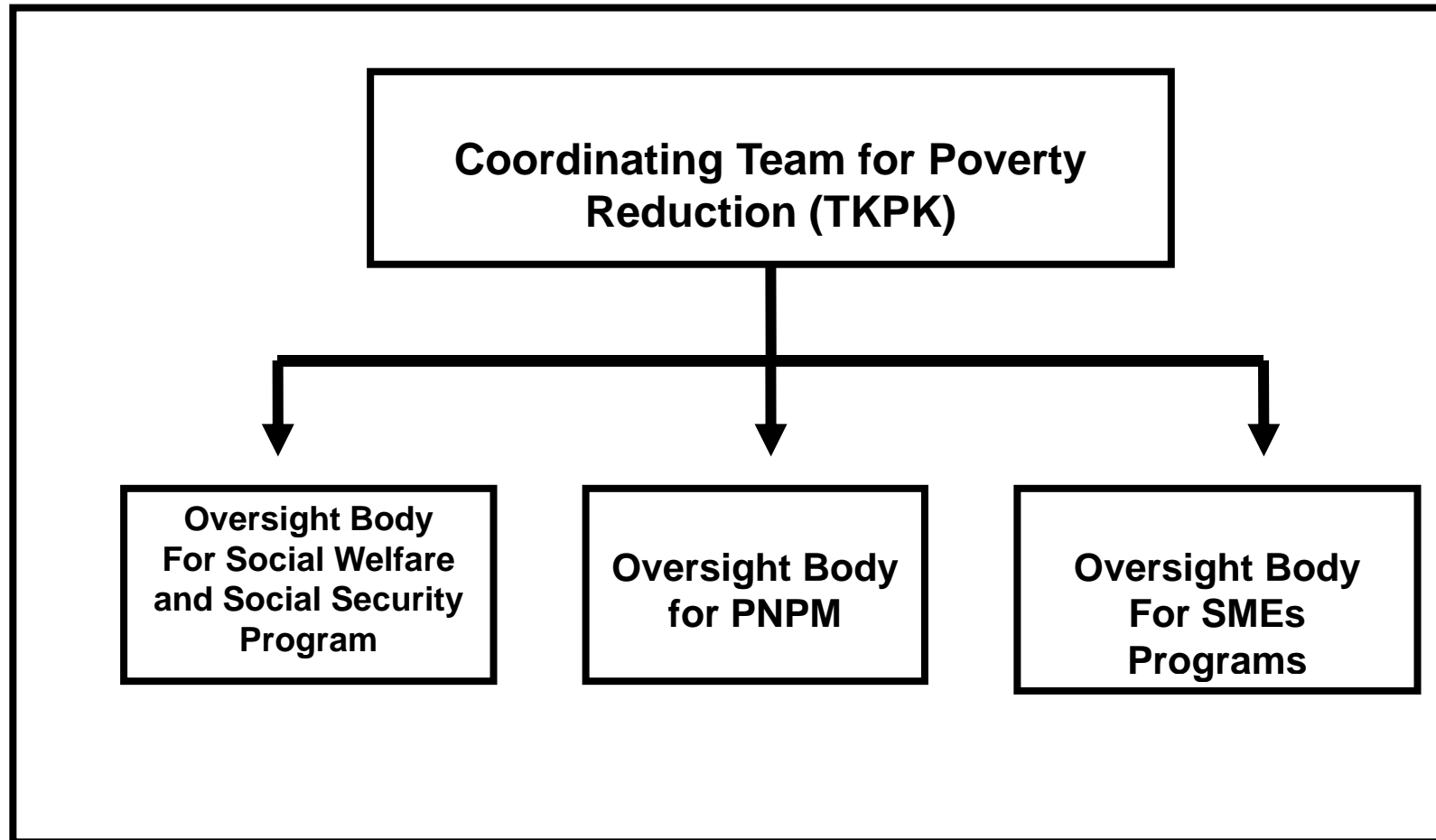


3 CLUSTERS OF POVERTY ALLEVIATION PROGRAMS



COORDINATING BODY FOR POVERTY REDUCTION

1 central/NATIONAL, 33 provinces and 497 districts



III. HRD: IMPROVING EFFECTIVENESS OF POVERTY ALLEVIATION

Key Challenges:

19

1. Poverty alleviation strategy at the local level.
2. Coordination mechanism and agenda.
3. Capacity of:
 - a. Institutions
 - b. Manpower/staffs
 - c. Instrument for coordination.
4. Tools: Pro poor planning and budgeting

Poverty alleviation strategy at the local level

20

1. Local poverty alleviation strategy:
 - a. Understanding local poverty situation and causes (government and parliament)
 - b. Needs to move out: jobs/income, infrastructure to facilitate moving out, capacity to maintain improved condition.
2. Integrating programs and resources to implement the strategy → fulfilling the poor community needs using the agreed strategy.
3. Monitor and measures improvements
4. Evaluation for improvement at the next round.

1. Data and indicators:
 - a. Poverty data: head count (macro) and identified poor HH (micro data)
 - b. Non-income dimension of poverty: housing, food, health, schooling, water and sanitation
2. Provision of business location for small and micro enterprises and informal sectors.
3. Agribusiness, culture and tourism business → creative business
4. Physical infrastructure in the rural areas
5. Use and pool 3 clusters of poverty program to facilitate above activities.
6. Data base and regular monitoring to make sure program reach the intended beneficiaries and effectively help the poor.

Coordination mechanism and Monitoring

21

1. Poverty strategy and program/activities → division of task among related technical ministries
2. Focus on the poorest area (districts, sub districts)
3. Targeting program to the right beneficiaries, especially welfare and poverty programs.
4. Agreed performance indicators
5. Monitor progress and evaluation and feed back for improvement
6. Impact on poor HH.

Capacity Building

22

1. Unified Data base system and capacity to maintain
2. Analytical capacity
3. Participatory approach:
 - a. Dialog with stakeholders especially with local parliament, universities and NGOs
 - b. More sensitive to communities needs (demand oriented)
 - c. Transparency and accountability
4. Measure of achievements/impact → basic needs for poor HH, poverty rates

POVERTY DATA BASE:

1. MACRO DATA:

POVERTY HEAD COUNT → ANNUAL SURVEY (SUSENAS) AND POVERTY LINE

2. MICRO DATA: POOR HH

2005: BY NAME BY ADDRESS

2008: BY NAME BY ADDRESS, ALL HH MEMBERS

2011 UPDATED

4. Pro Poor Planning and Budgeting

SCORE CARD

POVERTY MAP

Delapan Tujuan Pembangunan Milenium untuk Tahun 2015

- 1. Mengurangi Kemiskinan dan Kelaparan
- 2. Mencapai Pendidikan Dasar untuk Semua
- 3. Mempromosikan Kesetaraan Gender dan Pemberdayaan Perempuan
- 4. Menurunkan Angka Kematian Anak
- 5. Meningkatkan Kesehatan Ibu
- 6. Mengurangi Malaria, Demam Berdarah, dan Penyakit Menular Lainnya
- 7. Memastikan Keberlanjutan Lingkungan Hidup
- 8. Meningkatkan Kemitraan Global untuk Pembangunan

Kartu Penilaian MDGs Kota Semarang

Tujuan 1. Menanggulangi kemiskinan

Tujuan: Menurunkan proporsi penduduk miskin menjadi setengahnya antara 1990-2015.

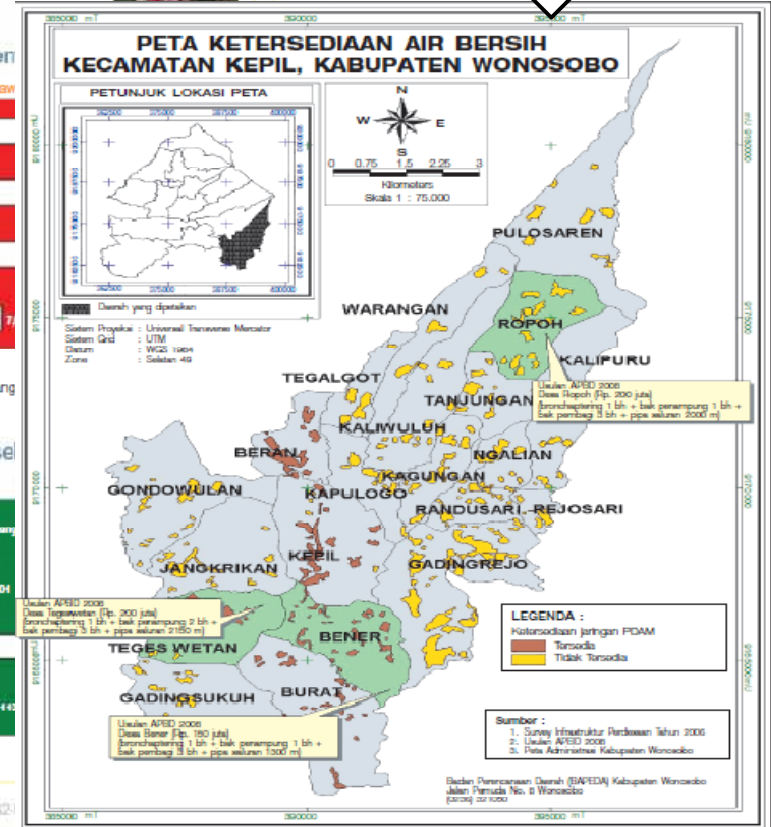
Persentase di bawah	
Kota Semarang	6,0
Provinsi Jateng	
Nasional	
MDG Target 2015	

Tujuan: Menurunkan proporsi penduduk yang setengahnya antara 1990-2015.

Tujuan 5. Meningkatkan kesehatan ibu

Tujuan: Menurunkan angka kematian ibu antara tahun 1990 dan 2015 sebesar tiga perempatnya.

46	Kota Semarang
104	Provinsi Jateng
	Nasional
44	MDG Target 2015



TERIMA KASIH